

TOPVERT E1 Series

High performance general purpose compact drive
Sensorless Vector Control
Output frequency:0.1-600Hz

1-Phase, 90~132VAC , 0.2kW~1.5kW
1-phase, 180~264VAC, 0.4kW~2.2kW
3-phase, 180~264VAC, 0.4kW~7.5kW
3-phase, 342~528VAC, 0.75kW~7.5kW

**TOPVERT G1 series**

High performance general purpose multi-function drive
Sensorless Vector Control,
output frequency:0.1-600Hz

1-phase, 180~264VAC, 0.4kW~2.2kW
3-phase, 180~264VAC, 0.4kW~75kW
3-phase, 342~528VAC, 0.75kW~315kW

**TOPVERT H1 series**

High performance multi-function high speed drive
Sensorless Vector Control
output frequency:0.1-6000Hz

1-phase, 180~264VAC, 0.4kW~2.2kW
3-phase, 180~264VAC, 0.4kW~75kW
3-phase, 342~528VAC, 0.75kW~75kW

**TOPVERT P1 series**

High performance multi-function variable torque drive
for Fan & Pump
Sensorless Vector Control
output frequency:0.1-600Hz

3-phase, 180~264VAC, 0.75kW~90kW
3-phase, 342~528VAC, 1.5kW~400kW

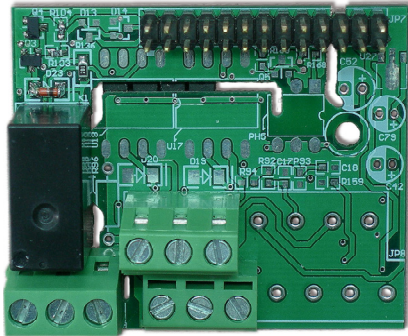
**TOPVERT S1 series**

High performance general purpose micro drive
Sensorless Vector Control
Output frequency :0.1-600Hz

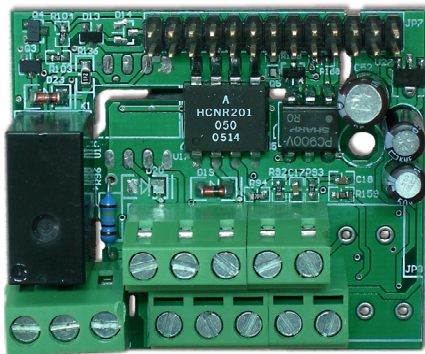
1-Phase, 90~132VAC , 0.2kW~0.75kW
1-phase, 180~264VAC, 0.4kW~2.2kW
3-phase, 180~264VAC, 0.4kW~3.7kW
3-phase, 342~528VAC, 0.4kW~3.7kW



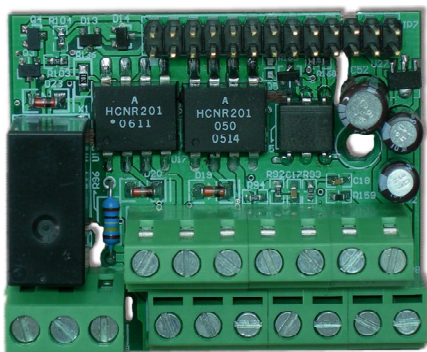
Options



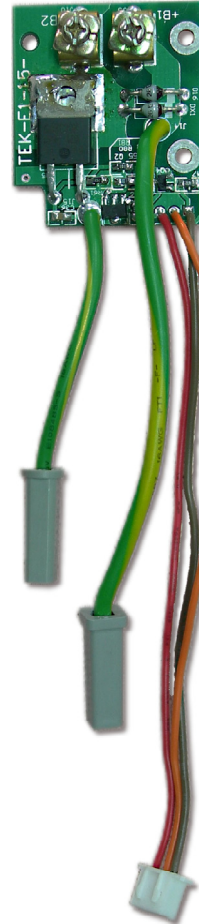
Standard I/O Card (Option A)
(include FWD/REV/MI1/MI2/DCM/E/
R1A/R1B/R1C terminals)



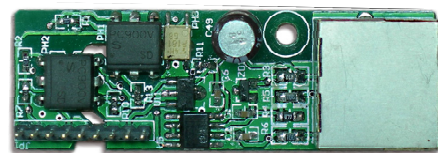
Advanced I/O Card (Option B)
(include FWD/REV/MI1/MI2/MI3/DCM/E/
+12V/AVI/DCM/R1A/R1B/R1C/AVO terminals)



Full-function I/O Card (Option C)
(include FWD/REV/MI1/MI2/MI3/MI4/
DCM/E/+12V/AVI/ACI/DCM/
R1A/R1B/R1C/MO1/MCM/AVO terminals)



Dynamic Braking
Resistor
(Option #1)



RS-485 Communication
Series Port (Option #2)