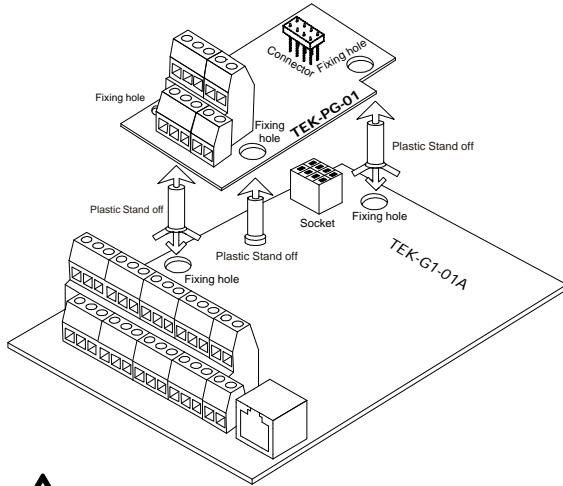


Speed feedback PG card (TEK-PG-01) Installation and Instruction manual

TEK-PG-01 Installation

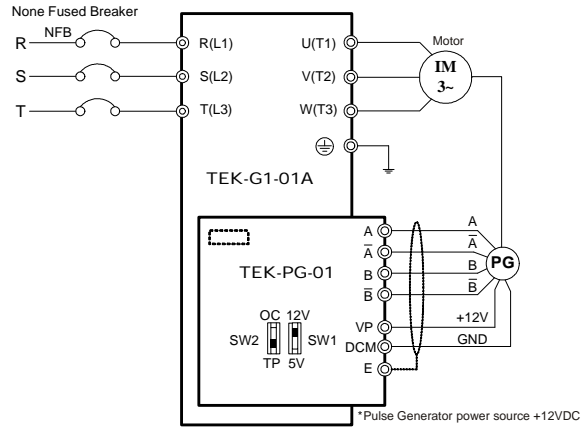


WARNING

Fig.1

Please be sure that the SW1 & SW2 are set to suitable the Pulse Generator to connected.

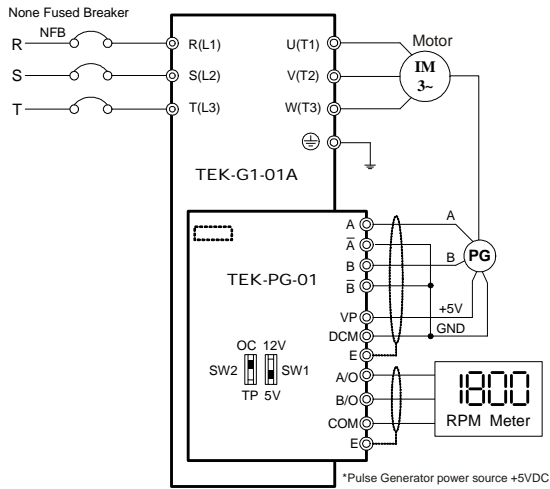
When Pulse Generators is Line Driver type (12VDC), please wire as following.



TEK-PG-01 and Pulse Generator Connections

Fig.2

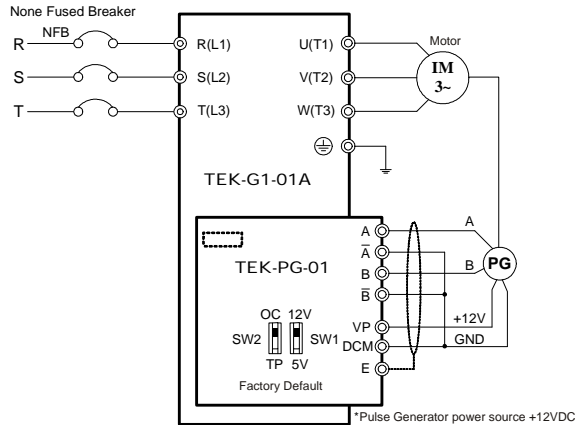
When Pulse Generators is Open Collector type (5VDC), with RPM meter attached. Please wire as following.



TEK-PG-01 and Pulse Generator Connections

Fig.3

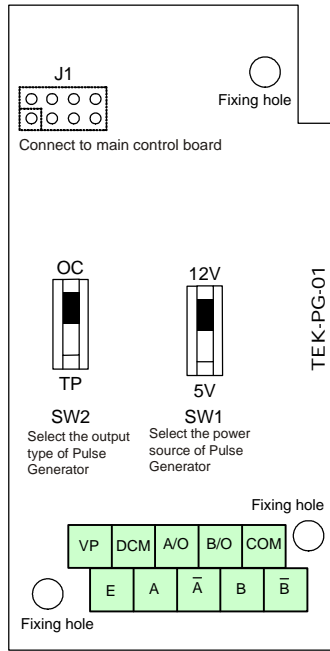
When Pulse Generators is Open Collector type (12VDC), please wire as following.



TEK-PG-01 and Pulse Generator Connections

Fig.4

TEK-PG-01 Explanations



Types of Pulse Generators

Types of Pulse Generators		Pulse Generators source = 5VDC	Pulse Generators source = 12VDC
Voltage Output type			
Open Collector type			
Line Driver type			
Complementary type			

Terminal Descriptions

Terminal Symbols	Descriptions
VP	Power source for Pulse Generators (SW1 can be switched to 12VDC or 5VDC). Output Voltage: (+12VDC±5% / 200mA) or (+5VDC±2% / 200mA).
DCM	Common of Power source (VP) and input signal (A, B).
A, A-bar, B, B-bar	Input signal from Pulse Generator. Input type is selected by SW2. Maximum 500KP/Sec.
A/O, B/O	Output signal for external RPM Meter. Maximum 24VDC / 300mA.
COM	Common of Output signal (A/O, B/O) .
E	Connect to ground.

Wiring Notes

- ✓ Please use a shield cable to prevent interference. Do not let wire parallel to any high voltage AC power line (220 V and up).
- ✓ Connect shielded wire to Terminal " E " only.
- ✓ Recommended wire size : 0.25 0.75mm² (AWG24 AWG18).
- ✓ In case of the Pulse Generator to be connected is Voltage Output type, Open Collector type or Complementary Type, please connect A-bar B-bar & DCM in short circuit as shown in Fig. 4.
- ✓ Wire length:

Types of Pulse Generators	Maximum Wire Length	Wire Gauge
Voltage Output type	50m	0.75mm ² (AWG18)
Open Collector type	50m	
Line Driver type	300m	
Complementary type	70m	

ML-PG-01-E-6607